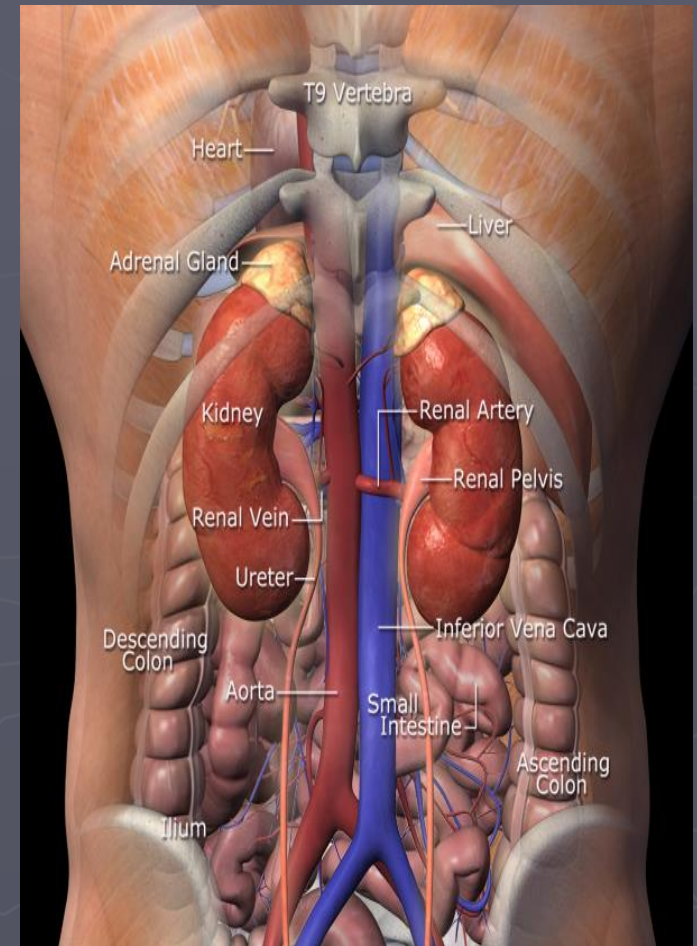


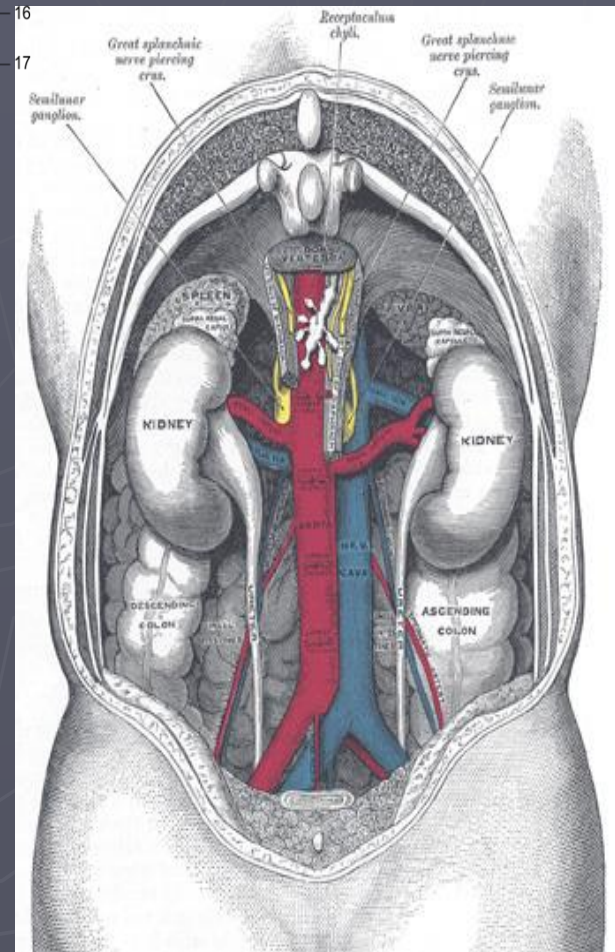
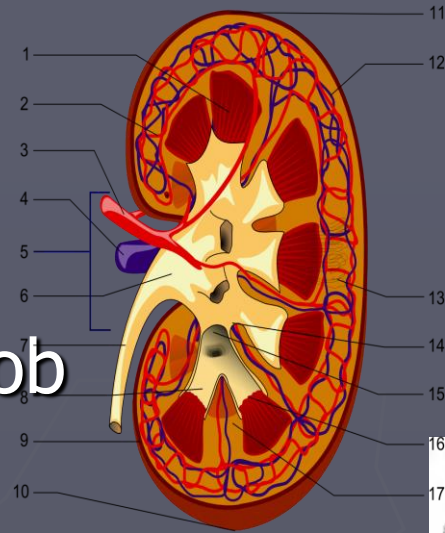
APARATUL EXCRETOR

- ▶ RINICHI
- ▶ CAI DE ELIMINARE A URINII
 - intrarenale
 - extrarenale :
 1. URETERELE
 2. VEZICA URINARA
 3. URETRA



RINICHIUL

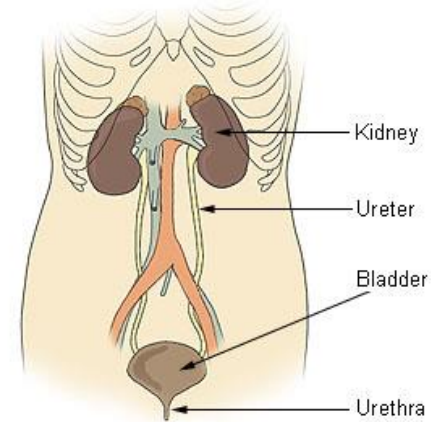
- ▶ Doi, de forma unui bob de fasole
- ▶ Localizati in lojele renale (lombar)
- ▶ Este format din NEFRONI



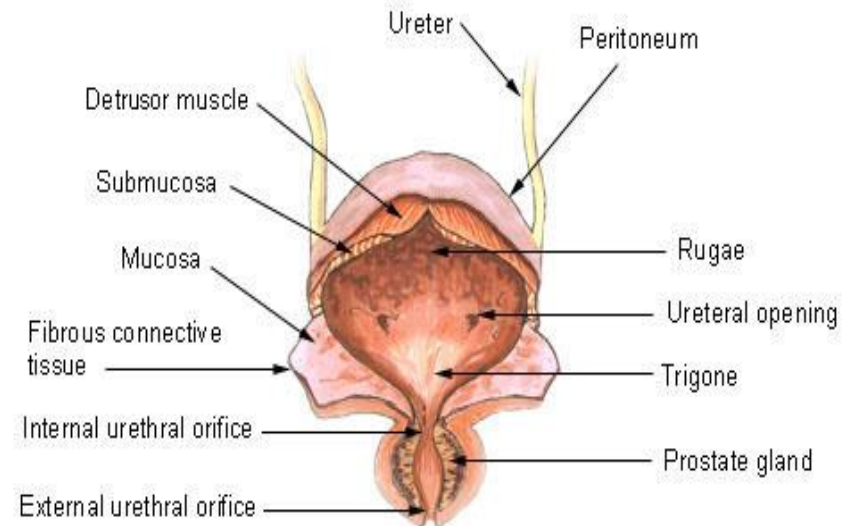
CAILE RENALE

- ▶ **INTRARENALE** : calice si bazinet
- ▶ **EXTRARENALE**:
 1. **URETERUL** (organ tubular care se deschide in vezica urinara)
 2. **VEZICA URINARA** (portiunea cea mai dilatata in care se acumuleaza urina intre mictiuni)
 3. **URETRA**

Components of the Urinary System



Urinary Bladder



URETRA

- ▶ Conduct de evacuare a urinei
- ▶ Are 2 sfinctere
 - intern-involuntar, sub vezica
 - extern-voluntar
- ▶ La femei
 - este mai scurta
 - serveste numai la eliminarea urinei
- ▶ La barbati
 - strabate prostata
 - este comuna aparatului urinar si celui genital (in ea se deschid canalele prostatice si ejaculatorii)

